

Samvejledning bordplade med stel til:

Sofa - Cafe - Barbord

72x72 72x110 72x130 80x80 80x120 80x140

Din bordplade kan anvendes til mange formål:

sofa - cafe - barbord. Derfor kan dit bord være leveret usamlet.

Find dit stel og se forslag til placering og samling.

Assembly Instructions for Tabletop with Frame for:

Sofa - Café - Bar Table Sizes:

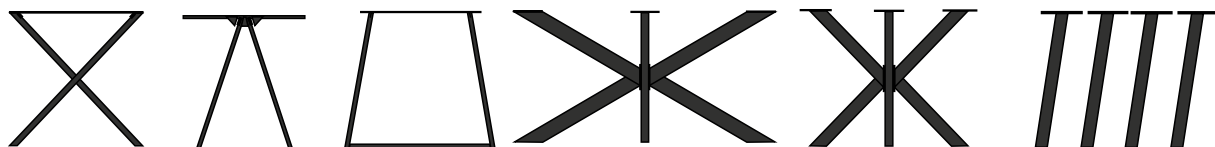
72x72, 72x110, 72x130, 80x80, 80x120, 80x140

our tabletop can be used for various purposes: sofa, café, or bar table.

Therefore, your table may be delivered unassembled.

Find your frame and see suggestions for positioning and assembly

Sofa



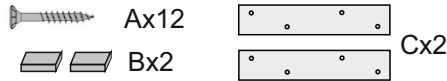
Cafe



Bar



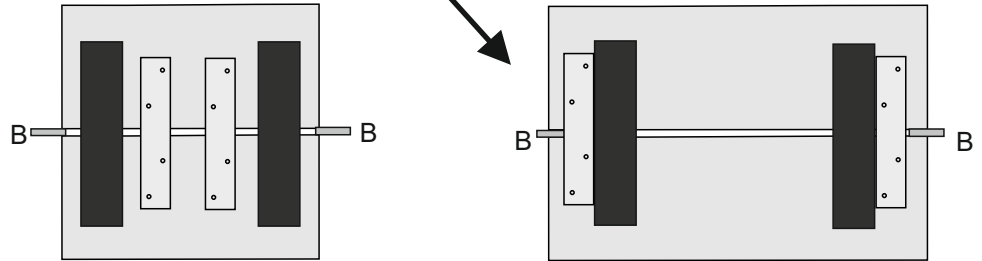
Sofa



Placer stellet tæt på kanten for at opnå max. stabilitet. Støtter er ikke nødvendige men kan placeres i midten.

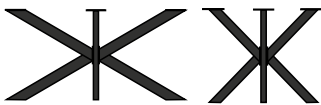
Place the frame close to the edge to achieve maximum stability. Supports are not necessary but can be placed in the middle.

Tjek at begge ender er lige inden der skrues
Check both ends are even before assembly



Placer stellet som du finder det pæneste, placer herefter støtter ved kanten.

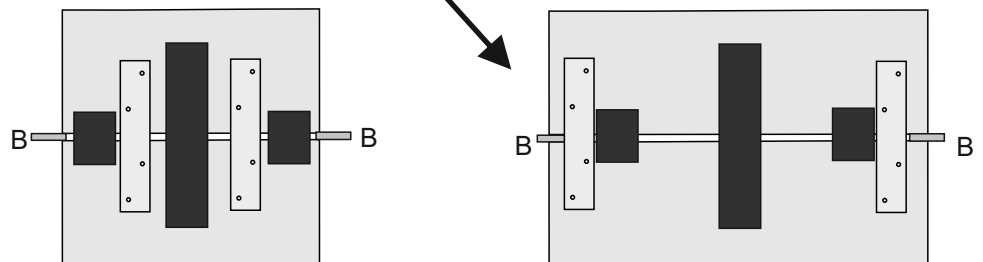
Place the frame as you find it most aesthetically pleasing, then place the supports at the edge.



Placer stellet i midten. Støtter placeres i mellem stellet.

Place the frame in the middle. Supports are placed between the frame.

Tjek at begge ender er lige inden der skrues
Check both ends are even before assembly



Placer stellet i midten. Støtter placeres yderst.

Place the frame in the middle. Supports are placed at the edge.

Tjek at begge ender er lige inden der skrues
Check both ends are even before assembly

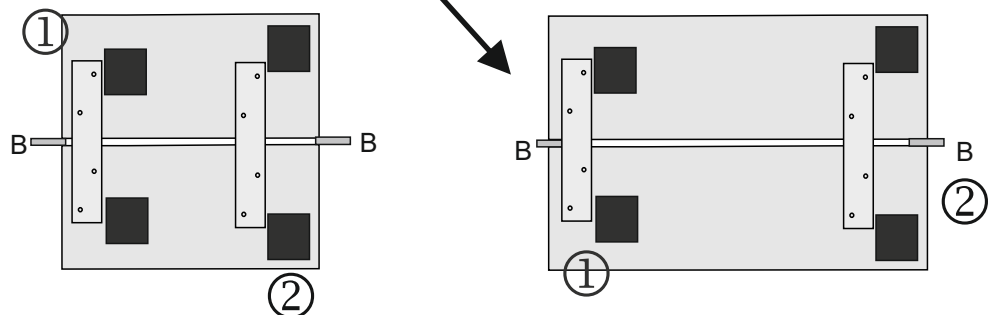


①

Mulighed 1
Placer støtte yderst. Placeres ben tæt på støtte.

②

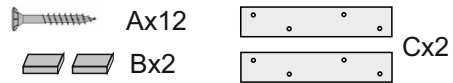
Mulighed 2
Placer ben i hjørner og placer støtte så tæt ved som muligt.



Option 1
Place support on the outer edge. Place legs close to the support.
Option 2
Place legs in the corners and position the support as close as possible.



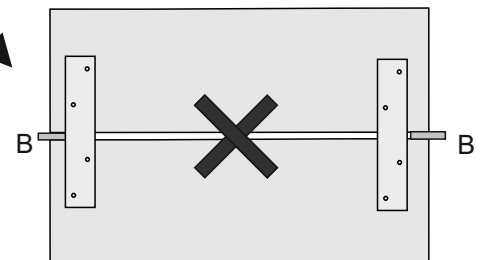
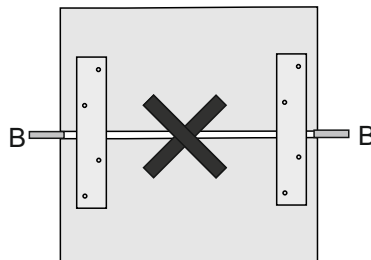
Cafe



Tjek at begge ender er lige inden der skrues
Check both ends are even before assembly

Placer stellet i midten.
Støtter placeres ved
kanterne.

Place the frame in the
middle.Supports are
placed close to ends..

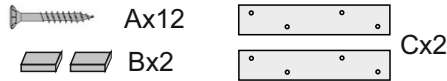


Placer stellet i midten.
Støtter placeres ved
kanterne.

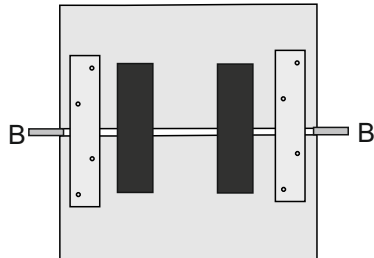
Place the frame in the
middle.Supports are
placed close to ends..



Bar

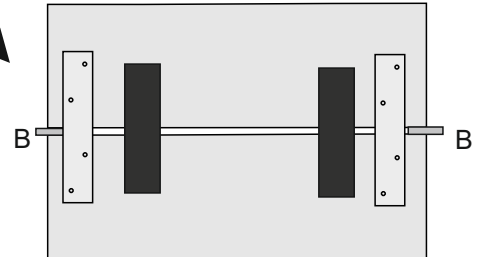


Tjek at begge ender er lige inden der skrues
Check both ends are even before assembly



Placer stellet i midten-
Støtter placeres i ender.

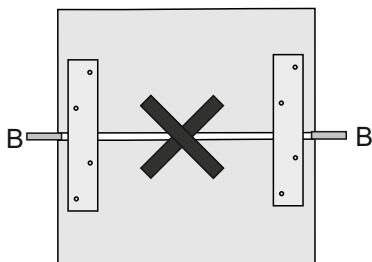
Place the base in the center.
Support close to ends.



Placer stellet i midten-
Støtter placeres i ender.

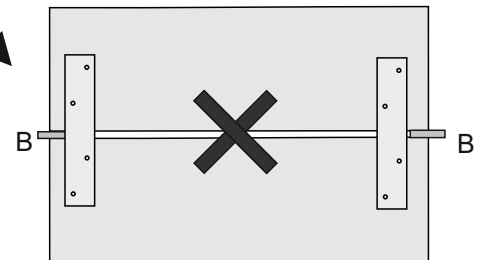
Place the base in the center.
Support close to ends.

Tjek at begge ender er lige inden der skrues
Check both ends are even before assembly



Placer stellet i midten-
Støtter placeres i ender.

Place the base in the center.
Support close to ends.



Placer stellet i midten-
Støtter placeres i ender.

Place the base in the center.
Support close to ends.

Tjek at begge ender er lige inden der skrues
Check both ends are even before assembly

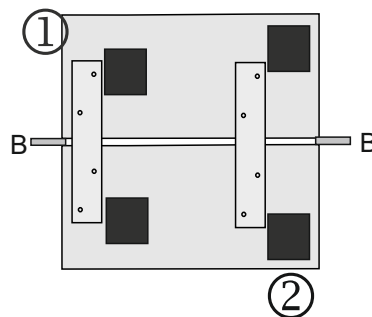


①

Mulighed 1
Placer støtte yderst.
Placeres ben tæt på støtte.

②

Mulighed 2
Placer ben i hjørner
og placer støtte så tæt ved som muligt.



Option 1
Place support on the outer edge.
Place legs close to the support.
Option 2
Place legs in the corners
and position the support as close as possible.

Placer ben ved hjørner
Støtter placeres ved siden
af ben.

Place the legs at the
corners, place support
next to the legs..

